

ADVANCING

Montana Technological University



FEBRUARY 20, 2025 | COPPER LOUNGE | 3:00-4:00 PM

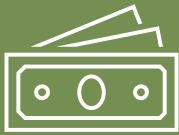




TODAY'S AGENDA



Welcome



Capital
Campaign



Enrollment
Update



Campus
Facilities
Master
Plan



Construction
Update



Celebrating
Success



Upcoming
Events



MISSION

As Montana's Special Focus Institution, Montana Technological University provides a transformative student experience by developing leaders and advancing science, engineering, and technology, with the purpose of benefiting humanity while meeting the changing needs of society.

The image shows two individuals in full white protective suits, including hoods and masks, working in a laboratory. They are seated at a workstation with multiple computer monitors. The scene is lit with a mix of cool blue light and warm orange light, creating a high-tech, futuristic atmosphere. A 'Danger' warning sign is visible on the wall in the background.

OUR VISION

To be the institution of opportunity and innovation.

GOALS



Student Success



Programs of Distinction



**A Healthy and Vibrant
Campus Ecosystem**

MONTANA
TECHNOLOGICAL UNIVERSITY





CAPITAL CAMPAIGN

MPK&D
Ronni Cranwell and Pat Bosse

MONTANA
TECHNOLOGICAL UNIVERSITY



ENROLLMENT UPDATE

ENROLLMENT UPDATE

- **Enrollment Update**
 - Spring headcount up nearly 8%, FTE 6%
 - Fall application and housing numbers also positive
- **New (slightly improved) FAFSA**
- **Enrollment Services Updates**
 - Registration
 - Commencement
- **Spring Recruitment**
 - Events
 - Yield Outreach
 - Cultivating Juniors and Seniors



An aerial photograph of the Montana Technological University campus. The foreground shows a dense forest of evergreen trees. The middle ground features a variety of campus buildings, including several large brick structures with green roofs, a modern dark-colored building, and a large stadium with a green field and bleachers. The background consists of rolling green hills and a range of mountains under a blue sky with scattered white clouds. The title 'CAMPUS FACILITIES MASTER PLAN' is overlaid in large white text across the center of the image.

CAMPUS FACILITIES MASTER PLAN

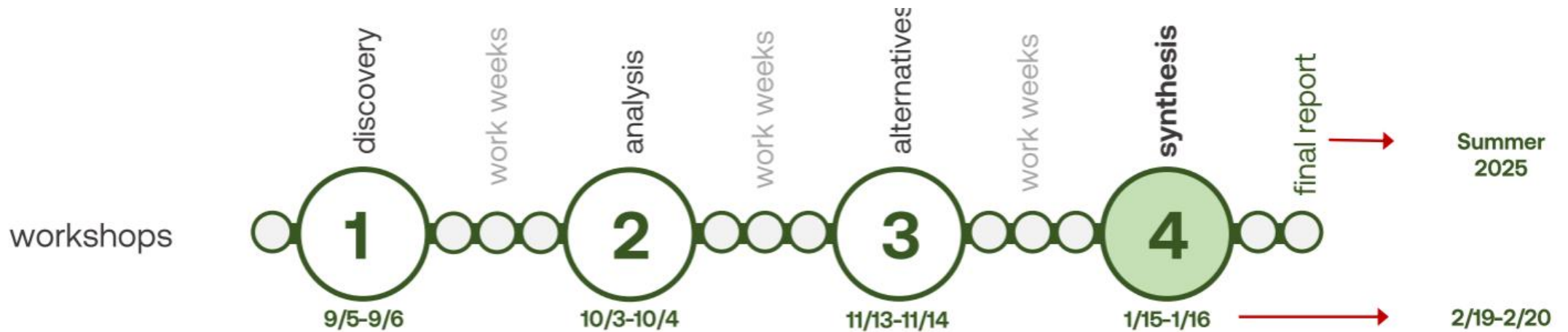
MONTANA
TECHNOLOGICAL UNIVERSITY



CAMPUS FACILITIES MASTER PLAN

- Master plan is a comprehensive plan for our physical campus.
- 10-year timeframe
- Began process summer of 2024
- Purpose: to determine the future of the physical campus as well as to make informed decisions on the projects of Main and Engineering Halls
- Nearing completion of the master plan
- Numerous workshops completed with consultants and constituents
- Community forum held last night

WORKSHOPS

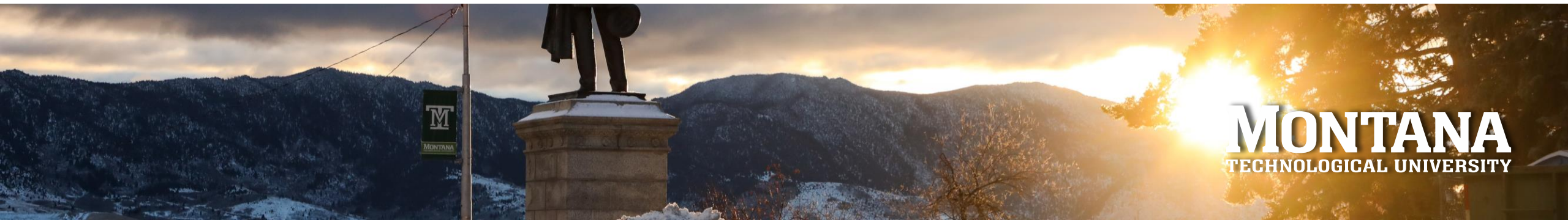


synthesis

- Refinement of alternatives and presentation of preferred plan for discussion
- Leadership provides final commentary on preferred

DRIVING PRINCIPLES

- Be deliberate in pursuit of future enrollment by focusing and amplifying message of exceptional STEM and Health education
- Celebrate hands-on learning and continue to grow research opportunities across undergraduate and graduate levels
- Align with Strategic Vision in creating a Healthy and Vibrant Campus Environment
- Create hybrid, multi-use facilities that encourage collaboration, cross-pollination, and interdisciplinary scholarship across colleges and departments
- Pursue physical infrastructure to support accessibility and inclusivity
- Identify and nimbly respond to industry partnerships and funding opportunities



SPECIFIC GOALS



ENROLLMENT

On-campus student population of 2,500 by 2034, representing 3% annual growth (1,927 current on-campus students)



HOUSING + DINING

Provide an additional 300+ beds for MTech students (current 460 beds)
Expand dining to meet growth



ATHLETICS

HPER renovation Phase 1
HPER addition Phase 2
Stadium expansion



PARKING

Expand available parking on campus to an additional 400+ spaces (997 current spaces)



STUDENT SERVICES

Co-locate all business office operations
Consolidate student services



OFFICING

Develop hub officing strategy for a percentage of graduate students and/or faculty members

SPECIFIC GOALS



ACADEMIC

Main & Engineering Hall renovations

COT Lineman Indoor Training Facility

Reed House renovation for Marketing + Career Center

Library renovation for modern Learning Commons

SUB renovation – student-focused programming

Plan for a new Academic Event Hall (event space + active learning classrooms)



RESEARCH

Develop west campus for research innovation and expanded field activities

Partner with industry to develop new central campus Research Institute (academic research)



CAMPUS

Central Courtyard redevelopment

Re-imagine Park St as a pedestrian-friendly promenade with connected outdoor programming

Evaluate feasibility of new southern campus access following the BA+P trail

MASTER PLAN PRIORITIES



IMMEDIATE PRIORITIES (1-3 YRS)

- R1 - Main and Engineering Hall Renovations
- R1 - Reed House Renovation
- R1 - HPER Facility Upgrades Phase 1
- N1 - Highlands College COT Lineman's Indoor Training Facility
- N1 - Stadium Village Phase 1 **Planning** (126 beds)
- C1 - Courtyard Redevelopment
- C1 - West Surface Parking Development (158 spaces)
- C1 - Traffic and Campus Access Improvements **Planning**



NEAR-TERM PRIORITIES (3-5 YRS)

- R2 - Library Learning Commons Modernization
- R2 - Student Union Renovations
- N2 - Research Innovation Campus Phase I Building
- N2 - Stadium Village Phase 1 **Implementation** (126 beds)
- N2 - Research Institute **Planning**
- C2 - Phase 1 Park Street Improvements



MID-TERM PRIORITIES (5-10 YRS)

- N3 - Research Institute **Implementation**
- N3 - Academic Event Hall **Planning**
- N3 - Research Innovation Campus Phase II Building **Planning**
- N3 - Stadium Expansion **Planning**
- N3 - Stadium Village Phase 2 **Planning**
- C3 - Phase 2 Park Street Improvements



LONG-TERM PRIORITIES (10+ YRS)

- N4 - Academic Event Hall **Implementation**
- N4 - Research Innovation Campus Phase II Building **Implementation**
- N4 - Stadium Expansion **Implementation**
- N4 - Stadium Village Phase 2 **Implementation**
- C4 - Phase 3 Park Street Improvements

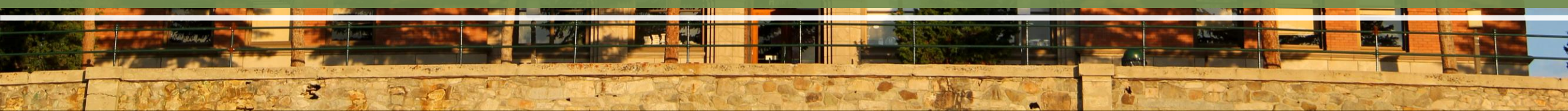
A photograph of two young men walking on a paved path on a university campus. They are walking from left to right. The man on the left is wearing a pink long-sleeved shirt with 'LA VERNE' on it, blue jeans, and white sneakers. He is holding a coffee cup. The man on the right is wearing a blue t-shirt with a logo, black shorts, and dark sneakers. They are both carrying backpacks. In the background, there is a large, two-story brick building with arched windows and a central entrance with steps. A sign above the entrance reads 'ENGINEERING HALL'. There are trees and a clear blue sky. The right side of the image is partially obscured by a semi-transparent white overlay containing text.

NEXT STEPS

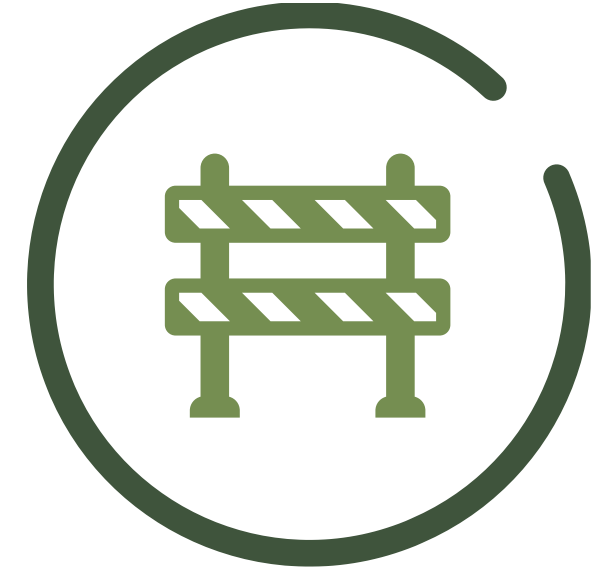
- Master Plan completed this spring
- Focus shifts from master planning to Main Hall and Engineering Hall programming, planning, design, swing space and construction



CONSTRUCTION UPDATE



CONSTRUCTION TIMELINES



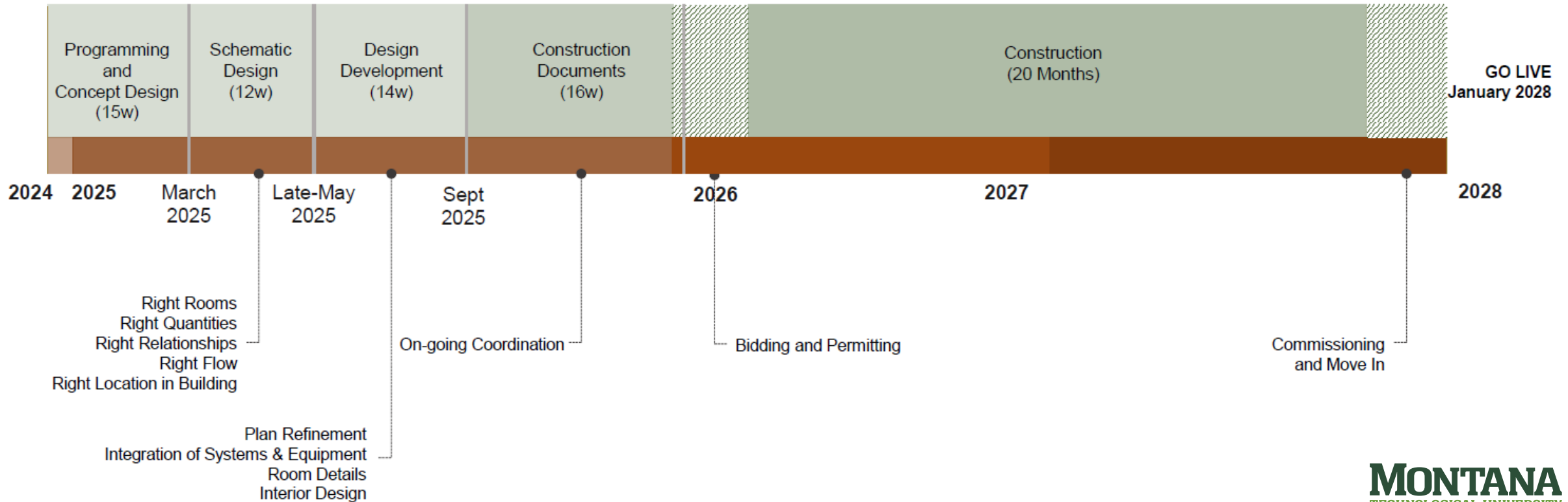
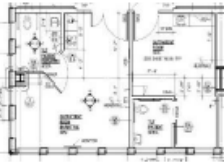
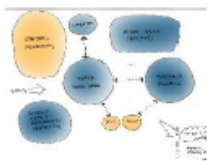
- **Main and Engineering Halls**

- Projects completed simultaneously
 - Saves \$1.5M-\$2M versus phasing
- Construction begins in January 2026
- Move out of buildings during December 2025
- Swing space being determined now – working with CLSPS and LCME
 - Faculty and Deans involved in the decisions

- **Heating system upgrade – phase 2.1 – mid-March to mid-August**

- Location – in front of the Mill Building
- Limited access to the courtyard from the south side of campus

PROJECT SCHEDULE



CELEBRATING SUCCESS

- Dr. Joe Cooper awarded the Outstanding Service to the Foundation Award from the American College Personnel Association Foundation
- Glowing Specimens back on display thanks to the Montana Tech Robotics Club
- Researchers explore early Earth analogs in new Nature Communications article
- Nursing Graduates Receive 100% pass rate on NCLEX-RN exam
- Sherry Lesar School of Nursing earns Healthcare Simulation Standards of Best Practice endorsement
- Casual Clothing Closet opens
- iPad check-in system at Spring Career Fair a success

LOOKING AHEAD

2/20: WBB/MBB v Western
(5:00 pm/7:00 pm, HPER)

2/21: Singo (6:00 pm, KC)

2/22: WBB/MBB v Providence
(2:00 pm/4:00 pm, HPER) – Senior Day

3/7: Spring Tech Day

3/13-14: Board of Regents (Helena)

3/17: St. Patrick's Day Parade
(12:00 pm, Uptown Butte)

3/17-21: Spring Break

3/27-29: Hockey Prospect Camp

3/31-4/4: Chancellor Candidate
Interviews



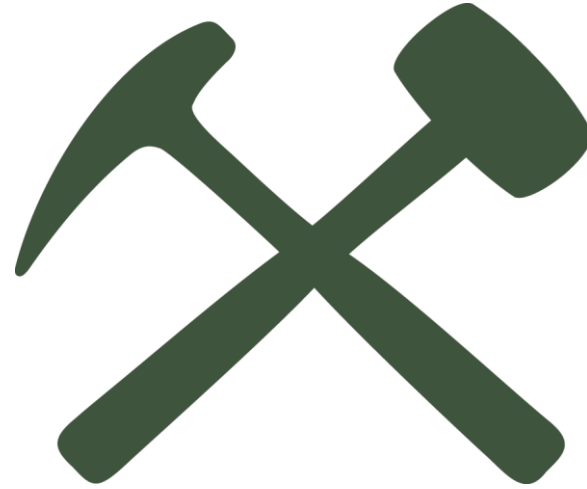
LOOKING AHEAD

- 4/9:** Highlands Exploration Day
- 4/10-12:** SPE Symposium | Foundation Board Meeting
- 4/12:** Digger Auction
- 4/23:** Faculty/Staff Awards | Early Impact Alumni Awards
- 4/24:** Techxpo | Student Awards
- 4/25:** Scholars Day
- 5/9:** Line Rodeo | Order of the Engineer | Chancellor's Reception for Graduates
- 5/10:** Nurse Pinning | Commencement



Q&A





THANK YOU!

MONTANA
TECHNOLOGICAL UNIVERSITY